



WIRELESS ALARM SYSTEMS CATALOGUE



Connected products that
APPreciate your security!



APPreciate VIDEOFIED SECURITY SYSTEMS

- 1** On detection, the camera records a colour video clip.
- 2** The video is sent to the monitoring station or one or more smartphones. The monitoring operators and the end users can watch the video of the intrusion in real time, removing any doubt!
- 3** When there is a genuine intrusion, the monitoring station calls the police or required response...

Videofied, a key player in the alarm system market!

Depending on the selected panel:

- Operates up to 4 years on one set of batteries
- Quick installation wireless or powered
- Alarm video sent over GPRS / IP / WIFI™
- Connected, accessible, portable, usable anywhere

CONTENTS

RESIDENTIAL SMALL BUSINESS ENTERPRISES

Plan	4
W range	6
X range	7
Devices	9

OUTDOOR AND VACANT SITES

Plan	12
EXT range	14
Devices	15

APPLICATION

Smartphone	16
Toolbox	18

Quality

Videofied products comply with local and international certifications: CE, EN50131-Grade 2, NFA2P 2 boucliers (Europe), IDA (Singapore), A-Tick (Australia), ICASA (South Africa), FCC, IC, PTCRB (North America), and are manufactured in certified factories in France ISO9001 and ISO/TS16949.



Recognized know-how!

RSI Video Technologies develops intruder alarm security solutions with a real dedication to technological innovation. Our products offer an **innovative and unique concept in the world!**

From design to conception, through sale, our team is at your service. Over 20 years of experience make RSI Video Technologies a leading player in the sector. Our products have demonstrated their capability with **more than 500.000 systems already installed.**



RESIDENTIAL, SMALL BUSINESS AND ENTERPRISES SECURITY

INDOOR VIDEO LIVE
MOTIONVIEWER **ISMV**

INDOOR DOOR
CONTACT **IDC**

SMOKE DETECTOR
ISD



INDOOR SIREN
SE



INDOOR
MOTIONVIEWER **IMD**



OUTDOOR VIDEO LIVE
MOTIONVIEWER **OSMVC**



OUTDOOR SIREN
OSX



ALARM PANEL
W RANGE



ALARM PANELS
X RANGE

W PANEL

APPRECIATE THE MODERN TECHNOLOGY!

The W panel is a wireless alarm system which adapts itself to the availability of transmission networks. During an intrusion, the W Panel is able to transmit alarms and videos on the **ETHERNET network (and/ or optionally Wifi™)** or **GPRS**. The W Panel is a wireless alarm system, which is optimized to work with the **smartphone APPLICATION**.

This system can be used for residential or small business protection.



	W (x)10 PANEL	WIP (x)20 PANEL	WIP (x)10 PANEL
GPRS Communication	✓		✓
Audio Verification	✓		✓
IP transmission		✓	✓
Wi-Fi™	Optional module (WWB100)	Optional module (WWB100)	Optional module (WWB100)
Hardwired inputs / outputs	Optional module (WIO100)	Optional module (WIO100)	Optional module (WIO100)
Wired siren	Optional (WIS100)	Optional (WIS100)	Optional (WIS100)
Number of devices	25	25	25
Power supply	Mains power (WPS100) with battery back-up	Mains power (WPS100) with battery back-up	Mains power (WPS100) with battery back-up



WWB100
Wi-Fi module



WIO100
I/O module
1 Input/2 Outputs



XL AND XLL PANELS

COMMUNICATE WITH GPRS...

The modern design of our XL & XLL Panels enables them to integrate into every type of interior (houses, apartments, etc.). An **accessible** and **connected** alarm system allowing video verification through GPRS communication.



XV-IP AND XT-IP PANELS

COMMUNICATE WITH ETHERNET AND/OR GPRS...

XV-IP and XT-IP Panels can be used as a **stand-alone system** or can provide a video upgrade to an existing alarm system (**Xtender**).



	XL PANEL	XLL PANEL	XV-IP PANEL	XT-IP PANEL
Keypad	✓			
Badge reader	✓			
2-way voice	✓		✓	
Siren	✓	✓		
GPRS Communication	✓	✓	✓	✓
IP transmission			✓	✓
Hardware inputs			2	3
Hardware outputs			1	2
Xtender mode				✓
Number of devices	19	25	25	25
Power supply	2 options : - 8 LR20 alkaline batteries - 4 LR20 alkaline batteries and power supply	2 options : - 8 LR20 alkaline batteries - 4 LR20 alkaline batteries and power supply	2 options : - Connected with 9VDC to 12 VDC, with 4 LR20 alkaline batteries back-up - 4 LSH20 lithium batteries (GPRS only)	2 options : - Connected with 9VDC to 12 VDC, with 4 LR20 alkaline batteries back-up - 4 LSH20 lithium batteries (GPRS only)



DEVICES

ISMV INDOOR
VIDEO LIVE
MOTIONVIEWER



IMV INDOOR
MOTIONVIEWER



IMD INDOOR
MOTION
DETECTOR



OMVC
& **OSMVC**
OUTDOOR
MOTIONVIEWER



IDC INDOOR
DOOR
CONTACT



ICT INDOOR
UNIVERSAL
TRANSMITTER



ISD INDOOR
SMOKE
DETECTOR



DEVICES

MotionViewers® are the critical devices that provide **video verification** for whatever or whoever has triggered the PIR. The Indoor Motion Detector is a wireless, indoor motion detector designed for use in Videofied security systems.

	ISMV INDOOR VIDEO LIVE MOTIONVIEWER	IMV INDOOR MOTIONVIEWER	IMD INDOOR MOTION DETECTOR	OMVC OUTDOOR MOTIONVIEWER	OSMVC OUTDOOR VIDEO LIVE MOTIONVIEWER
Use	Indoor	Indoor	Indoor	Outdoor	Outdoor
Video	Colour & Video Live	Colour	No	Colour	Colour & Video Live
Operating temp.	-10°/+55°C	-10° / +40°C	-10° / +40°C	-25° / +70°C	-25° / 70°C
Installation	Screw on the wall	Screw on the wall	Screw on the wall	Mounting Arm Kit (Ref. MBW110)	Mounting Arm Kit (Ref. MBW110)
Protection rating	IP30 / IK04			IP65/IK06	IP 54 / IK 06
Battery life	4 years	4 years	4 years	4 years	4 years
Power supply	3 CR123A lithium batteries	2 LS14500 lithium batteries	1 LS14500 lithium battery	4 LS14500 lithium batteries	4 LS14500 lithium batteries
Animal Immunity		Optional (IMVA)	Optional (IMDA)	Programmable	Programmable
Vertical curtain lens			Optional (IMDC)	✓	✓

	IDC INDOOR DOOR CONTACT	ICT INDOOR UNIVERSAL TRANSMITTER	ISD INDOOR SMOKE DETECTOR
Hardware inputs		✓	
Hardware outputs			
Size	Body 95 x 25.8 x 24mm Spacer 64 x 15 x 10mm Magnet 64 x 15 x 11mm	80 x 35 x 23 mm	Diameter : 120mm Height : 55mm
Power supply	1 CR123A battery	1 LS14500 lithium battery	1 CR123A battery
Battery life	4 years	4 years	2 years
Operating temp.	-10°/+55°C	-10°/+55°C	-0° /+49° C



KEYPADS XMA/XMB

Keypads XMA / XMB are designed for configuring/programming and operating Videofied security systems.

Arm and disarm a Videofied system...



KEYPADS XMA

KEYPADS XMB

Use	Indoor	Indoor
Badge reader		✓ Badge Ref. : VT100
Panic button	3 options	3 options
Tamper detection	Open and back tamper	Open and back tamper
Keypad	✓	✓
Display	✓	✓
Power supply	3 LS14500 lithium batteries	3 LS14500 lithium batteries

REMOTE KEYFOB KF

With the keyfob, the user can arm and disarm the Videofied system remotely. It has an encrypted "rolling code" system that changes the actual signal sent to the panel every time it is used. It features audio feedback (beeping) at arming/disarming to verify communication with the panel and indicate entry/exit delay. A 1 button remote keyfob is also available, allowing you to send a panic event to the systems.



PROXIMITY TAGS VT

Compatible with XL panel, XMB Keypad and BR Badge Reader.



INDOOR SIREN SE



OUTDOOR SIREN OSX

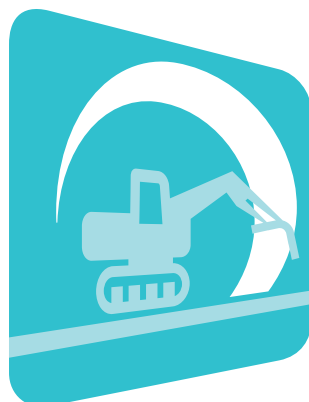


INDOOR SIREN & 2 WAY VOICE SEV



Totally wireless, they can be mounted easily anywhere without the need to drill holes or run cables or power. Multiple sirens can be placed on one system.

	INDOOR SIREN SE	OUTDOOR SIREN OSX	INDOOR SIREN & 2 WAY VOICE SEV
Use	Indoor	Exterior	Indoor
Volume level	110 dBA @ 1 metre	105 dBA @ 1 metre	101,5 dBA @ 1 metre
Operating temperature	-10° / +40° C	-25°C / +70°C	-10° / +40° C
Strobe		✓	
Entry/exit delay beeps	✓	✓	✓
2-way voice			✓
Protection rating		IP44D/IK07	
Power supply	4 LR20 alkaline batteries	3 LR20 alkaline batteries	4 LR20 alkaline batteries



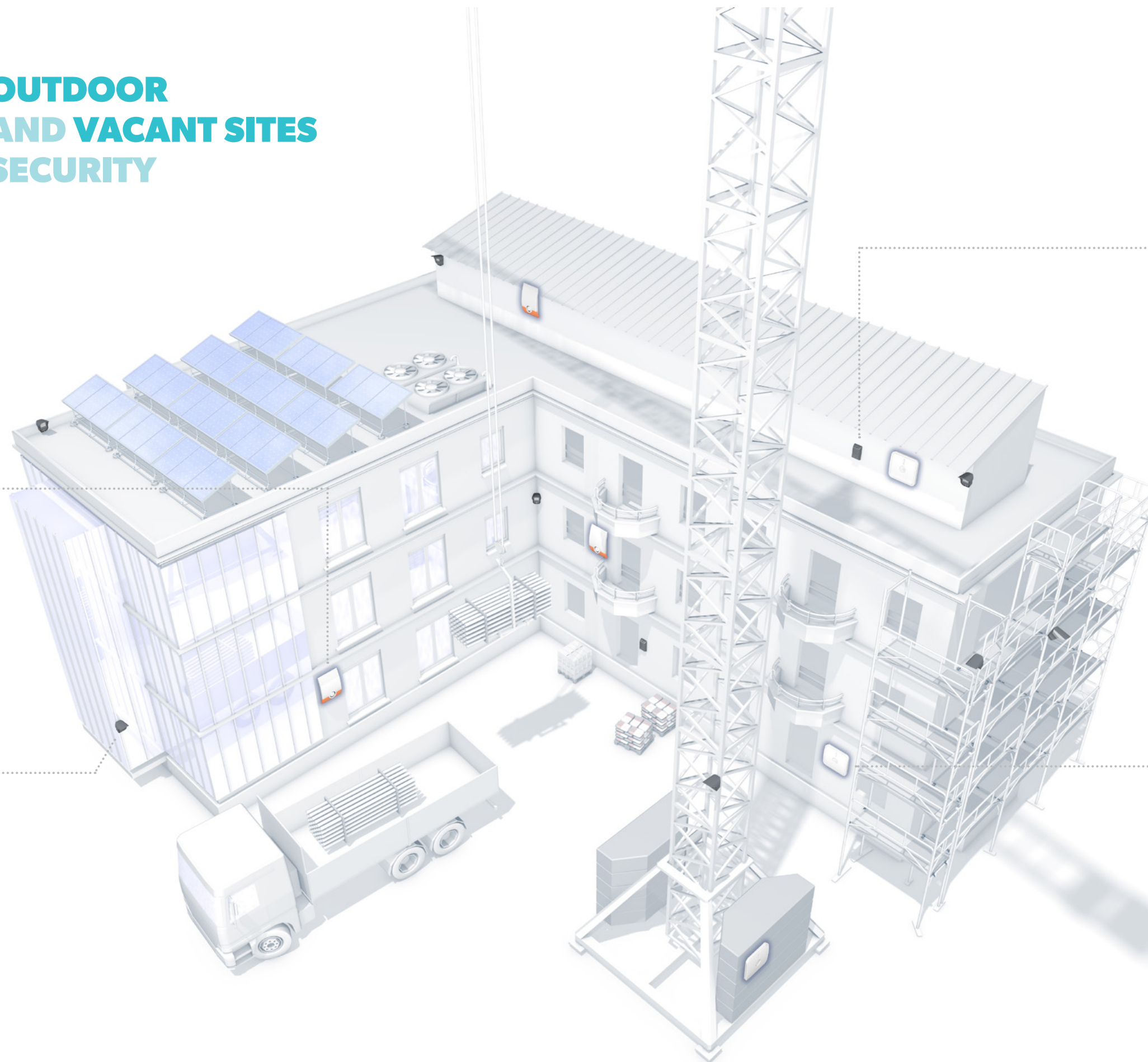
OUTDOOR AND VACANT SITES SECURITY



OSX
OUTDOOR SIREN



OSMV OUTDOOR
VIDEO LIVE MOTIONVIEWER



BADGE READER
BR



XTO-IP 2.0
PANEL



XTO-IP 2.0 PANEL

PROTECT EXTERNAL SITES

The XTO-IP control panel is a **weatherproof, wireless, battery operated**, hybrid alarm system. It is designed for outdoor commercial applications.



XTO-IP 2.0 PANEL

Operating temperature	-25° / +70°C
GPRS Communication	✓
Installation	Mounting Bracket included
Booster antennas GPRS & Radio	Included
Number of devices	25
Protection rating	IP65/IK06
Power supply	4 LSH20 lithium batteries

Examples of applications:

- Construction sites
- Vacant buildings /properties
- Vehicle compounds
- Fenced compounds
- Substations
- Cell Towers
- Guard Enhancement
- Remote Facilities, Mines, Gravel Pits
- Agriculture
- Solar panels
- Copper Theft
- Petro/Chem
- Church roofs

BADGE
READER BR

Badge Reader BR is designed to arm or disarm. The users simply place their badges next to the reader.

OUTDOOR
SIREN OSX

The sirens can be used externally to signal the intrusion. Several sirens can be used on the same system.

OUTDOOR MOTIONVIEWER
OMV & OSMV

No power required, 100% wirefree!

Since construction sites, vacant buildings, substations and all outdoor sites are usually uncontrolled environments, video verification is especially important to eliminate costly false alarms. Videofied's portability means it can be moved around as the project evolves – even if that means being installed months later at a brand new site!



OUTDOOR VISUAL
VERIFICATION DETECTOR
OMV-VX

The OMV-VX is 100% Wireless and can be installed anywhere very easily!
With a **double infrared IR detection**, the Motion Viewer camera OMV-VX provides a high-quality and very accurate detection.



	OUTDOOR MOTIONVIEWER OMV	OUTDOOR VIDEO LIVE MOTIONVIEWER OSMV	OUTDOOR VISUAL VERIFICATION DETECTOR OMV-VX
Video	Colour	Colour & Video Live	Colour
Operating temperature	-25° / +70°C	-25° / +70°C	-20°/+60°C
Installation	Mounting Bracket (Réf. MB110)	Mounting Bracket (Réf. MB110)	PIR detection adjustment (distance and orientation)
Tamper	✓ With an accelerometer captor	✓ With an accelerometer captor	✓
Angle detection	90° by default	90° by default	90°
Type detection	Infrared detection	Infrared detection	Double Infrared detection
Lenses	3 spare in the box: - Vertical curtain - Horizontal curtain (pet immune) - Long range	3 spare in the box: - Vertical curtain - Horizontal curtain (pet immune) - Long range	-
Masking kit	✓	✓	✓
Input/Output	✓	✓	-
Battery life	4 years	4 years	4 years
Protection rating	IP54/IK06	IP54/IK06	IP 55
Power supply	4 LS14500 lithium batteries	4 LS14500 lithium batteries	3 LS14500 lithium batteries ou 3 CR123A batteries



SMARTPHONE APPLICATION



VIDEOFIED®, simply closer to you...

From your office, holidays or anywhere in the world, the APPLication allows you to check Videofied systems on your smartphone.

It's a real interactive tool between you and the panel. The APPLication* *allows you to genuinely APPreciate your security system.*

* Contact your distributor / Videofied dealer to upload your application for smartphones.

APPreciate your security with THE SMARTPHONE APPLICATION

With the smartphone APPLICATION, all Videofied products can be connected to your phone or your tablet in Video Live.

What is happening at home ? Who is there? Did I arm my system?

The smartphone application integrates multiple functions, accessed remotely to meet your needs: check the status, arm or disarm your system, take photos or videos in real time, store your images to view them later, temporarily disarm a room, etc...

With Videofied, be Autonomous, Interactive, Connected ... and APPreciate your security!

SMARTPHONE APPLICATION	
Consult the event log	✓
Verify the status	✓
Arm / disarm remotely	✓
Picture	✓
Video Live	✓

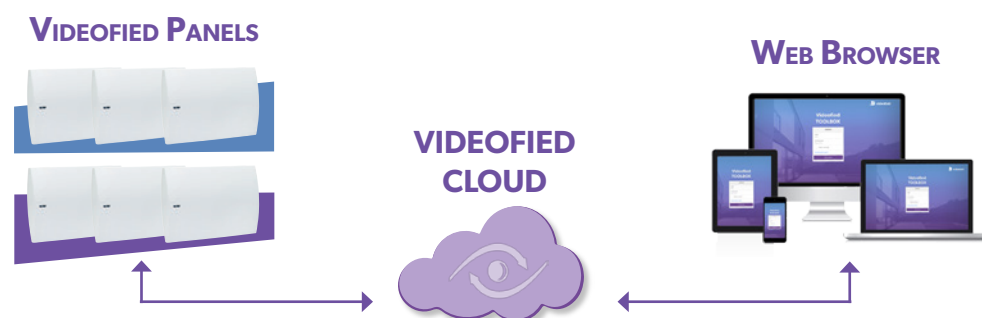


VIDEOFIED TOOLBOX



STAY CONNECTED TO YOUR VIDEOFIED SYSTEMS
STAY CONNECTED TO YOUR CUSTOMERS

Your panel configuration is synchronized with its virtual panel configuration in the Videofied Cloud. With the Toolbox you can modify that virtual configuration and manage remotely the maintenance of your Videofied systems.



- VIRTUAL MAINTENANCE

From the Toolbox, you can perform the following maintenance actions at any time: take a picture from one of the installed cameras, bypass a detector, add or modify a badge or a code, remotely register a device to the system, check panel status, device status.

- ACCOUNT MANAGEMENT

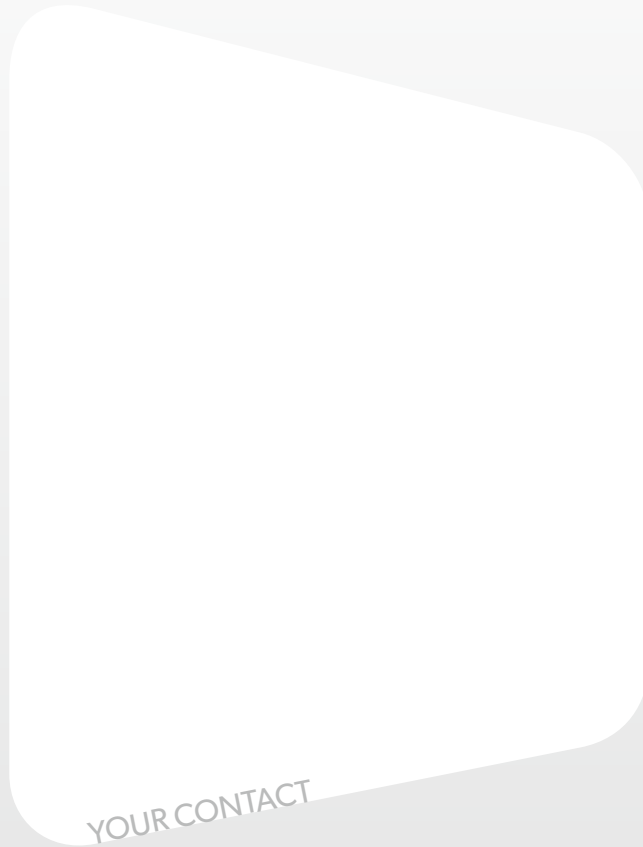
The company's technical manager will use a TOOLBOX MANAGER ACCOUNT provided by Videofied.

- AN INSTALLER TOOL

The Toolbox is an easy-to-use installer tool, which allows access to your Videofied system parameters.

- ERROR-FREE MAINTENANCE

The Toolbox provides error-free maintenance, such as highlighting missing or mandatory parameters, masking of critical parameters by the MANAGER, Toolbox modifications, event log.



www.videofied.com

THIS DOCUMENT IS NOT A LEGALLY BINDING DOCUMENT

DOCUMENT NON CONTRACTUEL

© 2017 RSI Video Technologies Videofied® and MotionViewer® are Registered Trademarks of RSI Video Technologies. Wi-Fi® is a registered trademark of the Wi-Fi Alliance

9FCNT0151-8 / AUGUST 2017